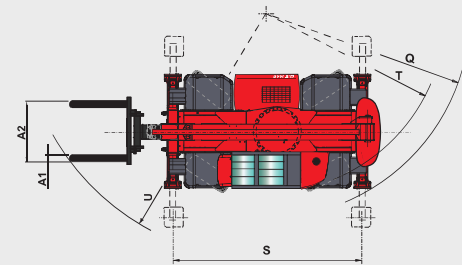
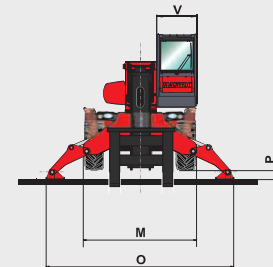
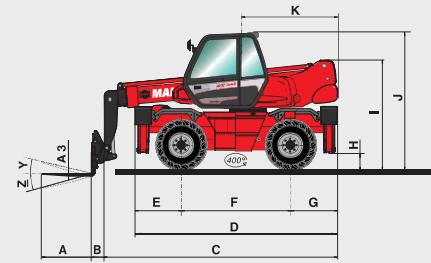


# MRT *EASY*

	MRT 1440	MRT 1640	MRT 1840
<b>Lifting capacity</b> (on stabilizers) at 500 mm from forks heels	4000 kg		
<b>Lifting height</b>	13.80 m	15.80 m	17.90 m
<b>Tyres</b>	400/70 - 20 14 PR		
<b>Forks (mm)</b> Length x width x thickness	1200 x 125 x 50		
<b>Braking</b>	multiple-disc brakes hydraulically assisted on front axles		
<b>Service brake</b>	multiple-disc brakes hydraulically assisted on front axles		
<b>Parking brake</b>	negative		
<b>PERKINS STAGE III A engine</b>	1104D-44T		
Capacity	4 cyl. - 4400 cm <sup>3</sup>		
Power at 2200 rpm (ISO/TR 14396)	101 HP/74.5 kW		
Max. torque at 1400 rpm (ISO/TR 14396)	392 Nm		
Injection	direct		
Cooling	water		
<b>Transmission</b>	hydrostatic with automatic power regulation (variable displacement pump and motor) with control inching		
Reversing shift	electromagnetic		
Number of gears (forward/reverse)	2/2		
Max. travel speed	32 kph		
<b>Rear axle</b>	automatic rear axle locking system at a rotation		
<b>4 stabilizers</b>	simultaneous or individually controlled		
<b>Rotation through 400°</b> (Optional 360° continuous rotation)	turret mounted on a double slew ring slewing system with negative brake		
<b>Hydraulics</b>	2 pumps gear type		
	115 l/min - 270 bar		
<b>Control</b>	2 electro proportional control joysticks for all hydraulic movements		
<b>Capacities</b>			
Cooling system	25 l		
Engine oil	8.10 l		
Hydraulic oil	150 l		
Fuel tank	130 l		
<b>Unladen weight</b> (with forks)	12490 kg	13000 kg	13300 kg
<b>Width overall</b>	2.40 m		
<b>Height overall</b>	2.97 m		
<b>Length</b> (forks carriage)	5.35 m	6.36 m	5.54 m
<b>Ground clearance</b>	0.34 m		
<b>Drawbar pull</b>	8600 daN		
<b>Noise and vibration</b>			
<b>Noise at driving position</b> (LpA)	79.7 dB		
<b>Environmental noise</b> (LwA)	104 dB		
<b>Vibration to whole hand/arm</b>	< 2.5 m/s <sup>2</sup>		
<b>Safety</b>	standard load moment indicator (mobile crane standards)		



mm	MRT 1440	MRT 1640	MRT 1840
A		1200	
A1		125	
A2		1320	
A3		50	
B		290	
C	5060	6075	5255
D		4350	
E		1015	
F		2320	
G		1015	
H		340	
I		2375	
J		2970	
K	2040		2485
M		2400	
O		3975	
P		160	
Q		3900	
S		4000	
T		3600	
U	5250	5520	5235
V		950	
Y		12°	
Z		105°	

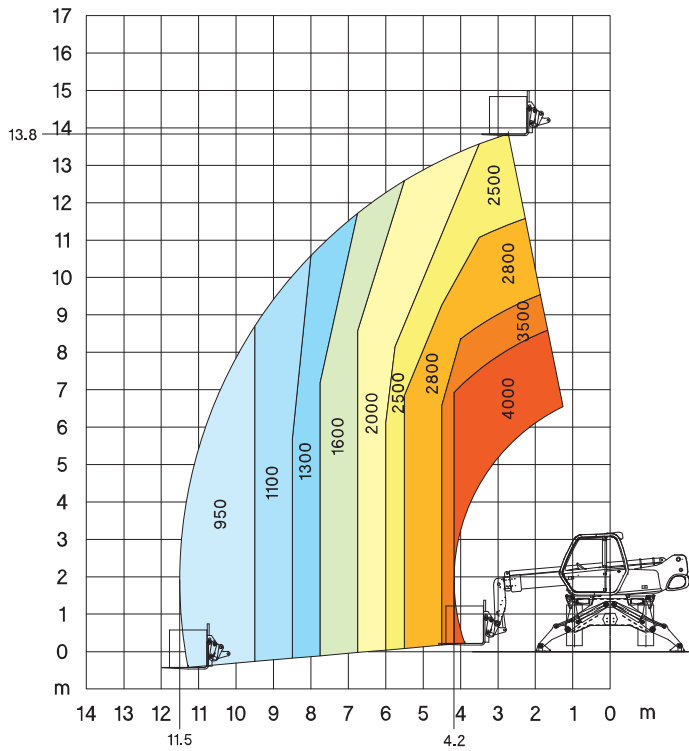


# MRT 1440

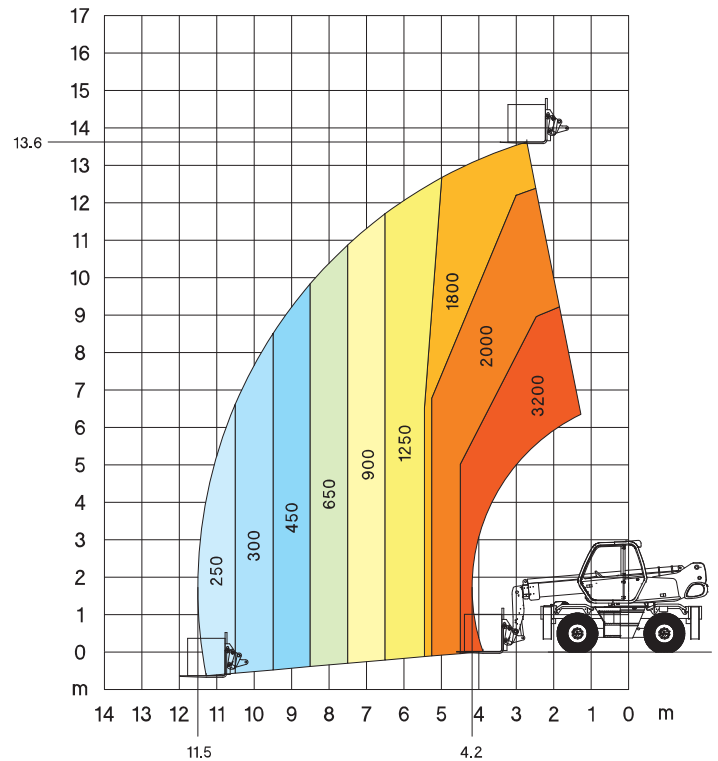
# Crane //



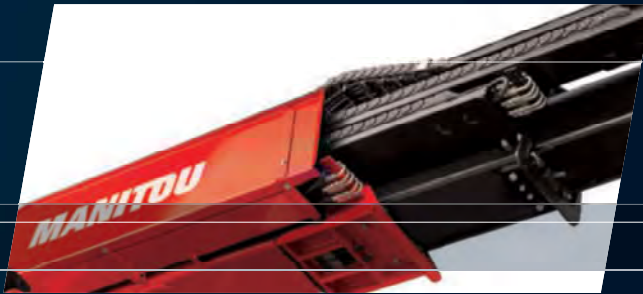
**Rotation on stabilizers  
with forks**



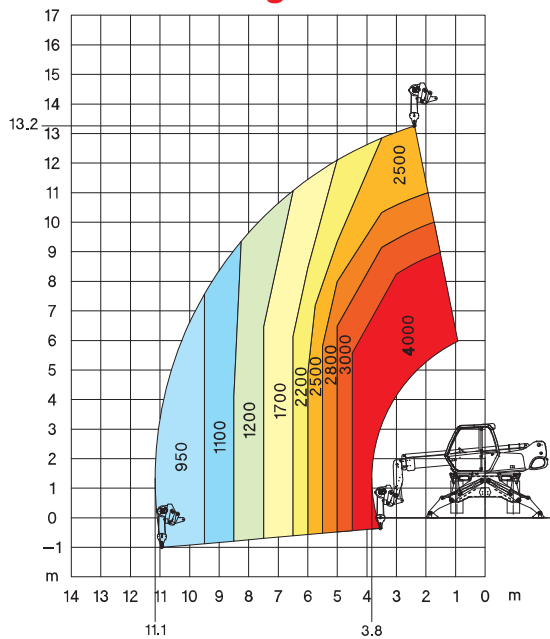
**Frontal on tyre  
with forks**



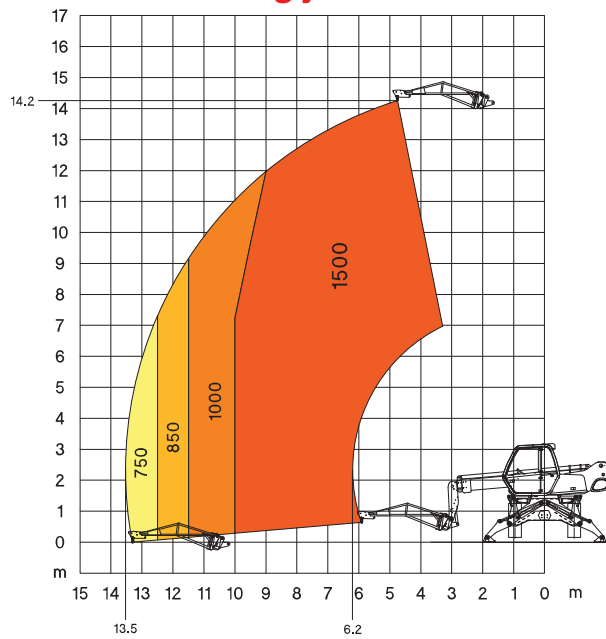
# Telehandler // Platform



Rotation on stabilizers  
with **4000 kg winch**

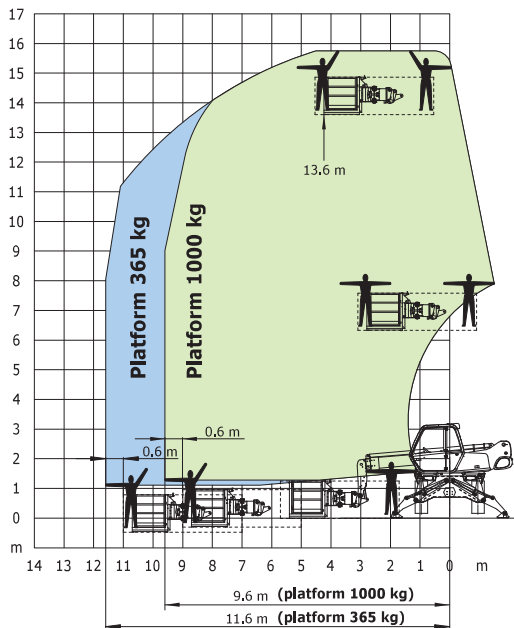


Rotation on stabilizers  
with **1500 kg jib**

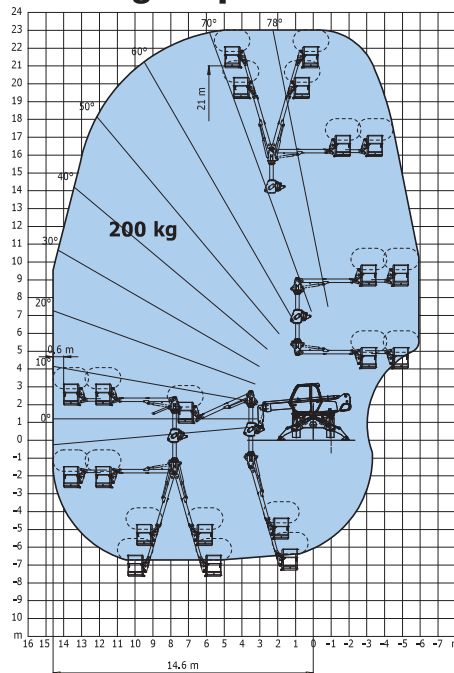


Rotation on stabilizers  
with **365/1000 kg platform**  
2.25 / 4 m - 3 persons

Platform 365 kg and 1000 kg



Rotation on stabilizers  
with **Aerial platform jib 2**  
200 kg - 2 persons



MANITOU 1440